

AMD Radeon™ RAMDisk

User's Manual and FAQ





Revision Tracker

Revision Number	Software Version	Description	Revision Date
04	V4.0.0	Initial Release	October 2012
05	V4.1.x	Version 4.1.x Update	March 2013
06	V4.2.x	Version 4.2.x Update	June 2013
07	V4.3.x	Version 4.3.x Update	October 2013
08	V4.4.x	Version 4.4.x Update	December 2013



Table of Contents

1. Introduction to RAMDISK.....	5
What is RAMDisk?	5
How does it work?	5
What is the benefit?	5
2. Screen-by-screen definition of settings.....	7
Menus and Start/Stop Buttons	7
Settings Tab	9
Advanced Settings Tab	15
Load/Save Tab	17
Event Log Tab	20
Options Tab.....	21
3. Technical Know How.....	23
Swap Space	23
Temp Files.....	23
System Restore.....	24
"Found New Hardware" Message	24
Disk Images.....	24
License Files	25
Installing	25
Uninstalling.....	25
Support.....	26
4. Frequently Asked Questions	27
1. Can I run RAMDisk on 64-bit versions of Windows?	27
2. Can I format a RAMDisk drive?.....	27
3. How do I create a non NTFS formatted RAM disk?.....	28
4. Can I modify the partitions on the RAM disk?	28
5. Why doesn't the image file timestamp seem to be changing when I have AutoSave turned on? ..	28
6. Can I boot from RAMDisk?	28
7. The driver is started but I don't see a drive letter for the RAM disk in My Computer.	28
8. Can I use a RAMDisk as a raw drive for a virtual machine (VMWare or VirtualBox)?	28
9. On RAMDisk application launch user gets error : "Unable to read hardware info: Unexpected error 6 at line 123"	29
10. Why are disk size and other options grayed out on first tab in 4.3 and 4.4? or	29
Why can I not change the disk size?	29

11.	Error Code 2203 or 2205 on RAMDisk installation	29
12.	Where do I download the previous version from?	29
13.	RAMDisk installer fails with message indicating “absence of .NET Framework 4.0”. But framework 4.0 and above is already installed.	29
14.	Even after uninstall Ramdisk continues to show in diskmgmt and uses up RAM.	29
15.	User manual and release notes do not load.	30
16.	Cannot uninstall ramdisk on windows 8.1	30
17.	Troubleshooting	32
5.	Known Issues	34



1. Introduction to RAMDISK

What is RAMDisk?

RAMDisk is a program that takes a portion of your system memory and uses it as a disk drive.

Conceptually, turning your memory into a usable disk drive may appear simple, but in practice there are many complex variables to deal with when operating a RAMDisk in Windows. This software is designed to be user-friendly no matter what your PC knowledge may be. Improvements will continue to be made to ensure new builds remain as easy as possible for end users. Regular software updates will be provided to improve features and address customer requests.

It is highly recommended that all users **READ THE INSTRUCTIONS** (this document) before trying the various RAMDisk settings.

How does it work?

RAMDisk is a kernel-level driver that presents a standard disk drive to the OS. However, it stores and retrieves data from the system RAM on your motherboard instead of an actual, physical disk. Along with the Kernel Driver is a GUI that talks to the driver and allows the user to set various options as well as start and stop the Driver (create or delete a RAMDisk).

The Driver has been written to WDM standards and creates a low-level disk object that Windows Device Manager and Disk Management are able to "see" and manage.

You can partition, format, mount a volume, and assign multiple drive letters to RAMDisk (but only if you would know how to do those things with a regular disk, RAMDisk does not do multiple drive letters for you).

Upon successful start of the RAMDisk, a kernel level driver (RAMDiskVE.sys) is loaded into the Windows/System32/drivers folder. This driver will be available to Windows each time RAMDisk starts. It is removed when RAMDisk is stopped.

What is the benefit?

In a word: **SPEED!**

Most users use RAMDisk to speed up applications like:

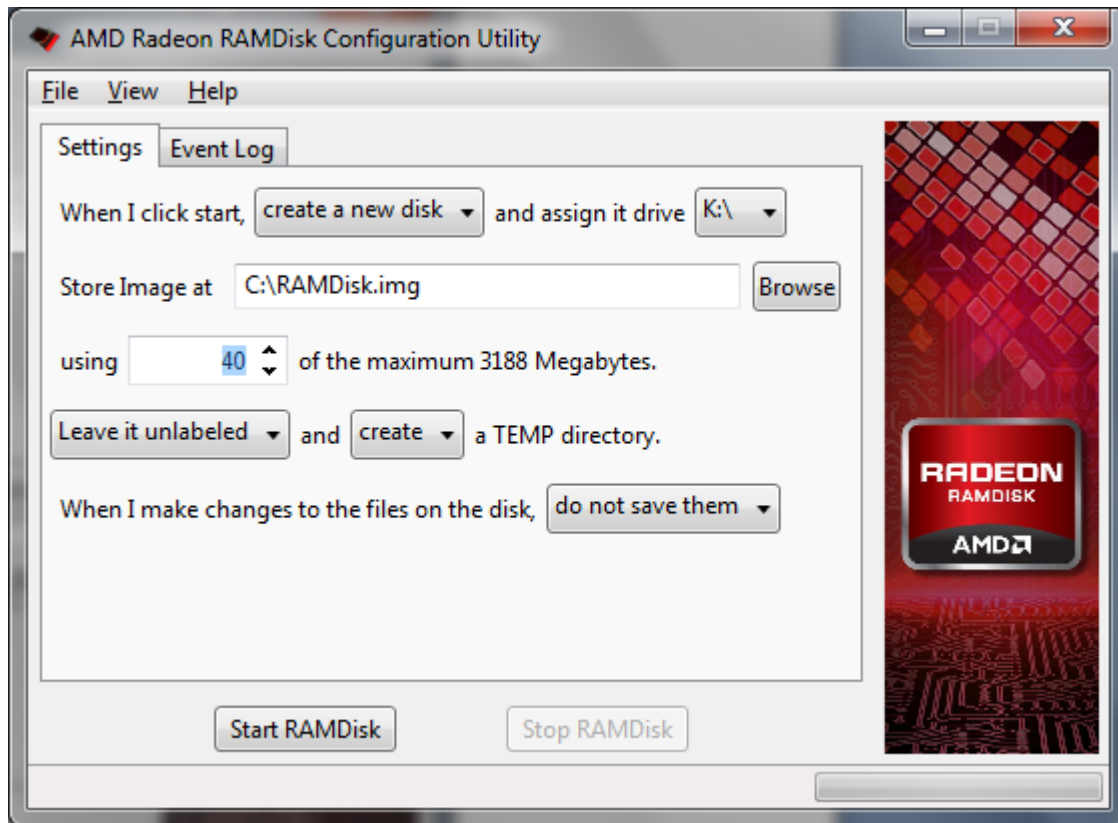
- Games
- Internet Explorer cache for faster web surfing
- Audio and Video editing
- CAD programs
- Software compilers
- Databases
- Speeding up CD duplication
- SETI processing
- TEMP files
- Swap space
- Web server cache
- Custom applications with high I/O, high bandwidth, or high security requirements

Some users like the security of the RAMDisk because if you do not choose to back up the RAMDisk, all information will be wiped upon power loss or shutdown. Since RAM cannot store any trace of information without power, you know the information is gone for good (not just hidden on a track of a hard drive that can be easily undeleted and even recovered after successive over-writes).

An additional feature of a RAMDisk is that it will never wear out. You can access it at maximum bandwidth 24/7/365 without fear of mechanical failure or fragmentation (a RAMDisk can become fragmented just like any other disk, but it does not take a performance hit like a physical disk does when it becomes fragmented). A RAMDisk operating at maximum bandwidth does not produce excessive heat, noise or vibrations.

2. Screen-by-screen definition of settings

Menus and Start/Stop Buttons



The menu items, the Start RAMDisk, and the Stop RAMDisk buttons are available from all tabs in the GUI.

File: Under this menu item you can:

Save Settings: Saves your configuration settings

Restore Default Settings: Restores the default settings, in case you need to get back to a known good state

Restore Last Saved [PAID Version only]: Restores the settings you had last saved.

Restore Active Settings [PAID Version only]: Restores the settings from the current, running configuration

Save Disk Image Now: Write a disk image immediately to a specified filename.



Exit: Exits the GUI, but does not affect the Driver. Only Start and Stop will actually create or delete the RAMDisk

View: Under this menu item you can select:

Advanced: Choose between a simplified settings view and an advanced view with more options.

Purchase: Under this menu item you can:

Buy Now: This will take you to Dataram's web site (the creators of RAMDisk) to allow the purchase of a license key for the full version of RAMDisk (no 4/6 GB limit, no pop-under reminders). Once the software license is purchased and successfully unlocked, this menu option will no longer appear unless there is a special promotion available.

Enter License Key: After you purchase a license from the Dataram web site, you will be issued a 16-digit code that can be entered by selecting this option. Once the code is entered successfully, the software will be unlocked, and this menu option will no longer appear. **A license key is good for ONE computer. Please be sure to enter the license key on the machine you wish to activate.**

*****Please note:** If you have version 4.3 or older of RAMDisk and you wipe your hard drive, you may need to obtain a new license file. Please contact customer support to obtain one.

Help: Under this menu item you can:

User's Manual: Opens this document

Release Notes: Opens a document to show the Release Notes.

Support Center: Takes you to Dataram's technical support web site

AMD Website: Takes you directly to the AMD Radeon RAMDisk homepage

Collect Support Information: This option collects information about your system configuration and your RAMDisk installation and saves it in a ZIP file on your Desktop. This information is valuable to our support team to help diagnose any support issues. None of the RAMDisk contents are collected in this file.

About: View version and registration information and get a link to AMD and Dataram home pages

Start RAMDisk: Pressing this button will start the RAM disk driver, creating a new RAMDisk. Be sure you have the settings correct for your system before you hit "Start RAMDisk". If you are in doubt, go to "File" > "Restore Default Settings". As a precaution, the "Start RAMDisk" button will stop any currently running RAMDisk before attempting to start a new one. If you have changed any of the RAM disk settings you will be prompted to save the current settings before starting the disk.

In some cases, you will get a message informing you to reboot in order to start the RAMDisk. Simply hit "OK" or "Cancel", exit the GUI and reboot. Be sure you do not have RAMDisk set to "Load Disk Image at Startup" unless you are sure the *.img file selected is the one you want loaded. After rebooting you should be able to start the RAMDisk with your selected settings.

Depending on your settings, once the RAMDisk Driver is started, it will stay running, even through reboots. It will only stop when configured to do so, or signaled to do so by hitting the "Stop" button.

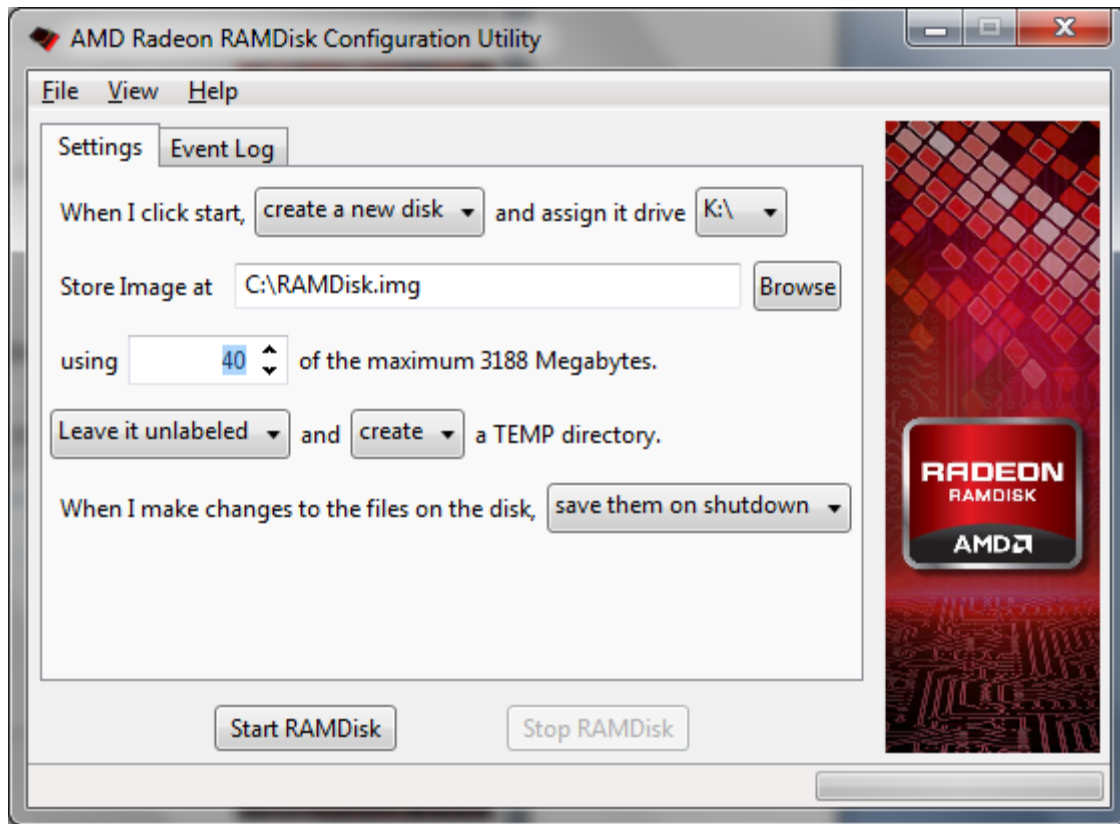
The Driver captures load and save *.img filenames and other settings from the GUI at the time of Start. It is important to note that in order to change major settings (like disk size), you will have to stop the Driver and restart. If you make major changes to the settings while the Driver is running, you will be prompted to stop the Driver before the settings will take effect. Some settings, such as the save options, can be changed while RAMDisk is running.

Stop RAMDisk: Pressing this button will dismount the RAM disk volume and stop the RAM disk driver, returning the memory used for the RAM disk to Windows. In order for the driver to unload successfully, there can be no open files on the RAM disk and Windows Explorer should not be displaying the contents of your RAM disk. In some cases other software or utilities will be accessing the drive in the background. In those cases it may not be obvious what is accessing the drive, and a reboot will be required to stop the RAMDisk.

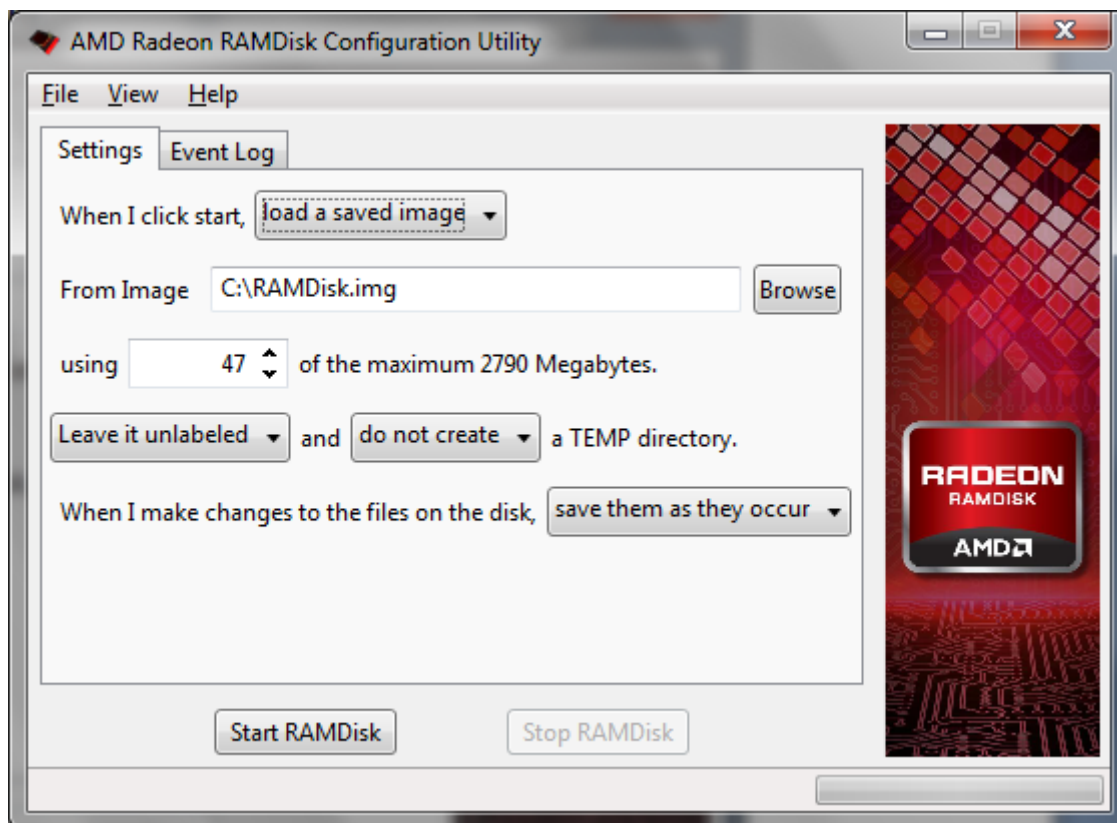
If you are using "**Background Update**" you may not be able to stop the driver without a reboot, due to the fact that the disk is being accessed by the backup feature. If the driver is unable to unload successfully, you will get an error message stating RAMDisk was unable to stop and advising a reboot. Reboot and RAMDisk will be stopped.

Settings Tab

The settings tab can be in either "create Mode" or "load existing image mode". Using "create Mode", a new RAM Disk can be created.



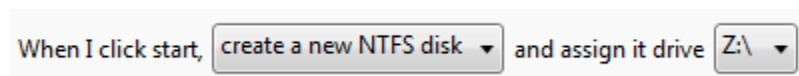
Using “load existing image Mode”, an existing image is used when RAM Disk is started.



This is the main GUI screen you will see each time you start the "Radeon RAMDisk Configuration Utility" program in the Radeon RAMDisk program group if the “Advanced” option under the View menu is not checked.

This tab will walk you through configuring your RAMDisk. Simply answer each question in order. Some of your answers will cause other fields to appear or disappear as needed.

Startup Behavior



This setting selects how RAMDisk behaves when you start it from the GUI. Your choices are:

Create a new NTFS disk: RAMDisk will create a new disk image formatted with the NTFS file system and using the selected drive letter.



When I click start, **load a saved image** ▼

Load a saved image: RAMDisk will load an existing disk image at startup.

If there has been a change to disk size or other disk format options, the existing image cannot be loaded. You will be asked if you want to create a new RAM Disk by overwriting the existing image.

New Image Size

using of the maximum 1446 Megabytes.

If you chose to create a new image, use this field to set the disk size. You are shown the maximum possible disk size based on the addressable memory in your system. You should normally choose a smaller value to leave plenty of room for your programs' working memory. See the guidelines in the Advanced Settings Tab section for more information.

Load Image

from

Size is 200 MB.

If you chose to load an existing image, use this field to set the path to the image file. The image should be located on the system boot drive in order to ensure that the drive is loaded early enough in the boot process.

If the image file is valid, you will be shown the size of the RAMDisk that will be created.

Label and TEMP Directory

Label it ▼ RAMDiskVE and do not create ▼ a TEMP directory.

If creating a NTFS disk, you have the option to set the drive label (this will help to identify the RAMDisk in Windows Explorer). You can also choose to create a TEMP directory automatically.

If you use the RAMDisk as the system TEMP directory (by changing the system environment variables TEMP and TMP) then keep in mind that many applications will use this space, including applications and applications installation programs. In particular, if an application installation program expects to write files to the system TEMP directory and then expects those files to be present after a reboot (to complete the installation) and you are not saving and restoring the disk on reboot, the application installer will fail and may leave your system in an unstable state. In addition, if the RAMDisk is too small the TEMP directory may fill up. Many applications do not handle a full TEMP directory gracefully.

Save Mode

When I make changes to the files on the disk, save them as they occur ▼

Use this setting to tell RAMDisk what to do with the changes you make to the image. Your choices are:

Do not save them: all changes will be lost each time the RAMDisk is stopped. Use this option if you are only storing scratch files or other files you don't want to have available when you reboot your computer.

Save them on shutdown: with this option the contents of the RAMDisk will be saved to an image file when RAMDisk is stopped, either through the GUI or by shutting down your computer. You can also use this setting temporarily to create an initial image file.

Save them as they occur [PAID Version only]: with this option RAMDisk will continuously update the image file as changes occur. This happens in the background and does not interfere with the performance of the RAMDisk.



Save Image

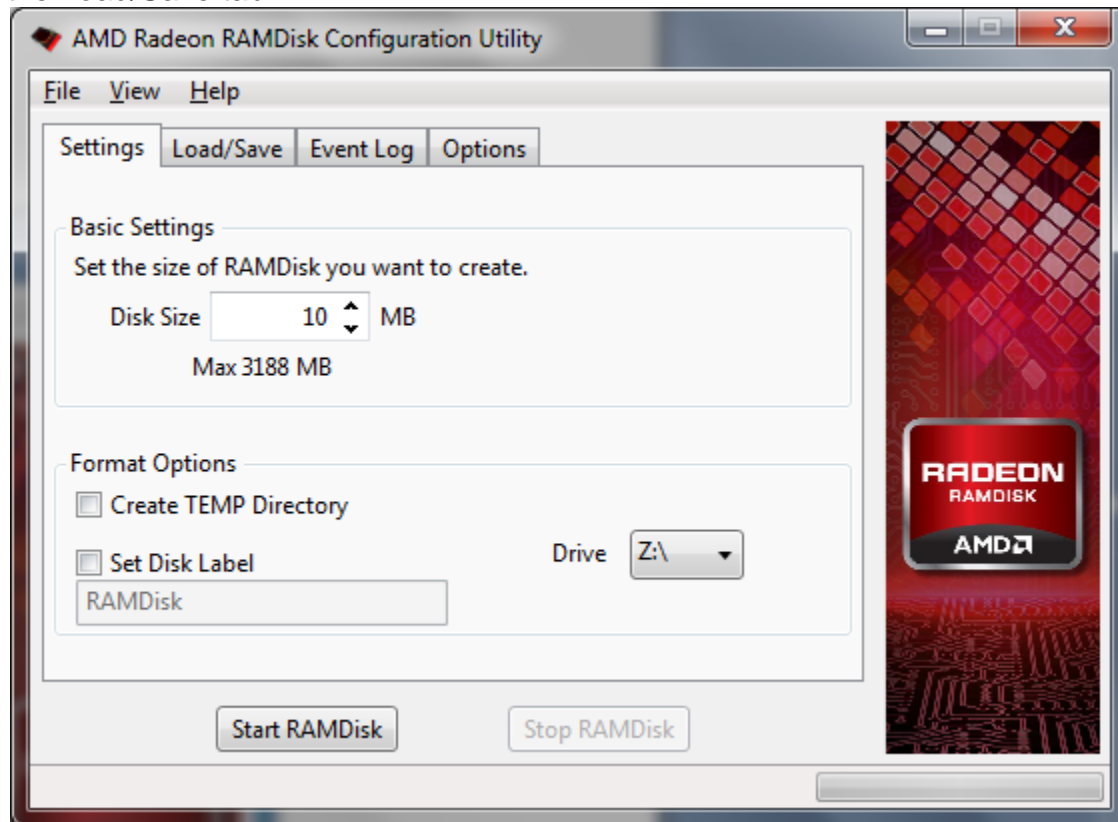
Store Image at

If you chose to save your changes and did not choose to load an image file, you will be given the opportunity to set the image file name. For best results, this image should be saved on the system drive.

When RAMDisk is started in this configuration, it will create the initial file system. Once the initial image file is created RAMDisk will update the start mode to load that image next time. If you do not want to save any further changes to the image, you can turn off the save option at this time and save the settings through the File menu. This change will take effect immediately.

Advanced Settings Tab

Using “create Mode”, a new RAM Disk can be created, if “Create” has been selected in the Load/Save tab.





When using “load existing image Mode”, an existing image is used when RAM Disk is started. However if you change any disk setting before RAM Disk Start, a new image will have to be created in order to use the new settings. To change the mode, go to Load/Save tab and change the load option.

Disk Size:

The amount of memory reserved by RAMDisk for the OS is 1 GB. Therefore, the maximum size RAMDisk you can create = (Installed RAM) – (1 GB).

Since you are using up some amount of your main memory to create a RAMDisk, you need to be sure to leave enough memory for your applications. If you create too large of a RAMDisk, you may actually slow down your applications. We recommend 4096 MB for your OS and applications, especially if you play games or use memory intensive applications.

Tip: You can check your memory allocation in Windows Task Manager if you want to see how your computer is using memory before and after you start RAMDisk.

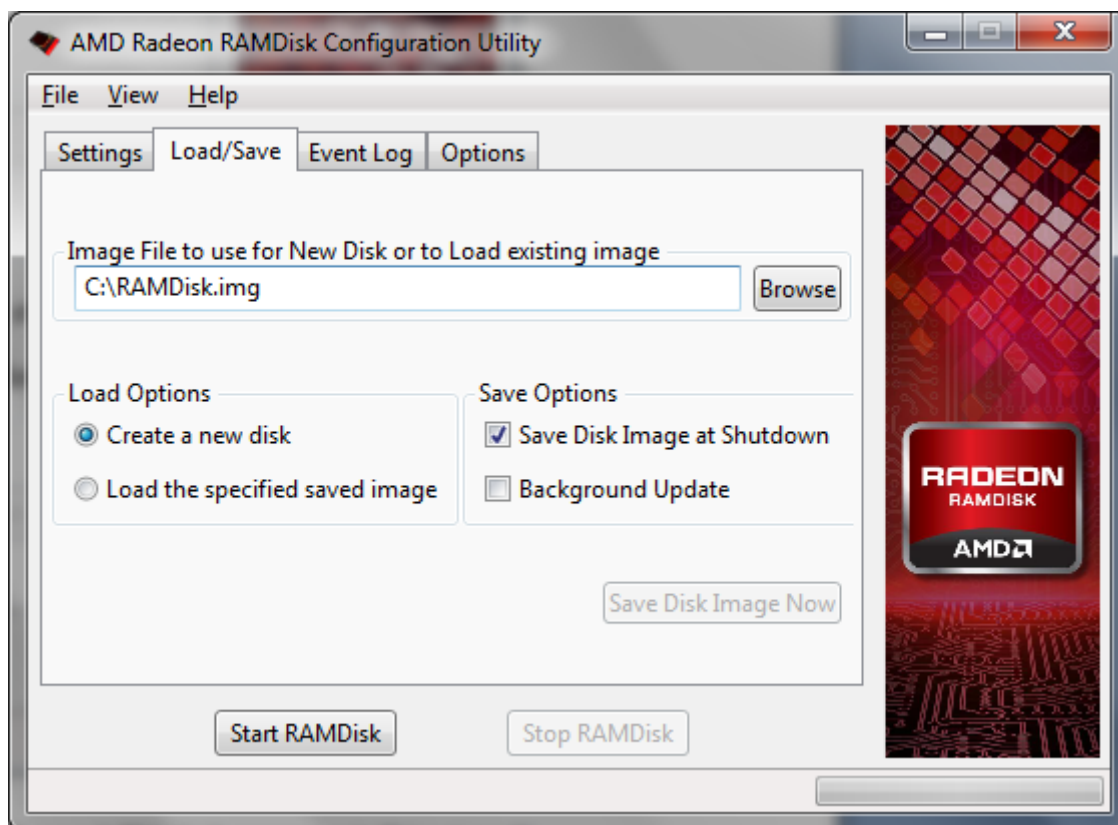
The GUI automatically uses NTFS as the file system type for the RAMDisk.

Create TEMP Directory: This option will create a TEMP directory in the RAM disk when it is started. This option is not available if you have selected "**Load Disk Image at Startup**" on the Load/Save tab. This option is useful if you want to locate your temporary files directory on the RAMDisk disk.

If you use the RAMDisk as the system TEMP directory (by changing the system environment variables TEMP and TMP) then keep in mind that many applications will use this space, including applications and applications installation programs. In particular, if an application installation program expects to write files to the system TEMP directory and then expects those files to be present after a reboot (to complete the installation) and you are not saving and restoring the disk on reboot, the application installer will fail and may leave your system in an unstable state. In addition, if the RAMDisk is too small the TEMP directory may fill up. Many applications do not handle a full TEMP directory gracefully.

Disk Label: Selecting this option will allow you to specify an 11 character disk label for the RAMDisk drive. This label will be created each time the RAMDisk is started. This option is not available if you have selected "**Load Disk Image at Startup**".

Load/Save Tab



Load Options: This box allows you to configure the "**Load Disk Image at Startup**" feature, which will automatically start the Driver with the saved *.img file and associated settings.

Create a New Disk: Use this option to create a new disk using the specified format options. The newly created disk is assigned a drive letter and saved to the image file path shown in the "**Image File**" box loaded automatically when RAMDisk starts.

Load Disk the Specified Saved Image: Check this box to have the *.img file shown in the "**Image File**" box loaded automatically when RAMDisk starts. It is important to understand that this *.img file is not a standard disk image file, but rather contains some information specific to the RAMDisk disk geometry, so you may not be able to use other disk image management software to create, edit, or save a *.img file, even if the *.img file extension might lead you to believe you can. The actual *.img file is not encrypted and can be viewed with hex editors, etc., and information can be extracted. It is best to use this feature *after* you have your settings worked out the way you would like them.

It is important to understand that once the RAMDisk driver is running, it continues to run, even through reboots (if configured to do so in the "Options" tab), regardless of your settings in the "**Load Disk Image on Startup**" checkbox. This setting simply tells



the Driver to either load a pre-specified image to the RAMDisk (checked), or create a new, blank one (unchecked) upon startup.

The disk image file must be accessible when the driver starts. For RAMDisks that you start and stop within a session (without a reboot) the disk image can be on any local drive. However, if you want an image to load at boot time the image must be located on the system drive. Disk images cannot be loaded from network shared drives.

If the Driver fails to load an image file (for whatever reason), it falls back on the rest of the configured settings, potentially giving you a formatted disk with Temp directory, etc. (depending on your settings), even though a perfectly good *.img file may exist. Check for a moved or misplaced *.img file if this occurs.

Save Options: These boxes allow you to configure the **"Save Disk Image at Shutdown"** feature, which will automatically save the entire contents of the RAMDisk along with the associated Driver settings upon Shutdown. If you enable a save option and do not have a load option enabled, the RAMDisk GUI will automatically create the initial image file then update the settings to enable **"Load Disk Image at Startup"**. This happens after the NTFS file system is created.

Save Disk Image On Shutdown: Check this box to have RAMDisk save all the contents of the RAMDisk and the Driver settings to the *.img filename specified in the **"Image File"** field. It is best to use this feature after you have your settings worked out the way you would like them. Saving a *.img file with the RAMDisk set up correctly is a good idea, but be careful not to accidentally overwrite your only good file when you shut down by using this option.

If an image file cannot be opened on shutdown, no image file will be created and a message will be sent to the Event Log. If there is insufficient disk space in the specified path, the output file will be truncated.

For RAMDisks that you start and stop within a session (without a reboot) the disk image can be on any local drive. While you can save an image on shutdown to any local drive, if you want an image to load at boot the image must be located on the system drive. Disk images cannot be loaded from or saved to network shared drives.

If the specified image file exists, it is renamed with a ".bak" extension and is not overwritten, unless this feature is disabled (see the Options tab).

Saving a disk image at shutdown may take several minutes, especially for disks >1GB, so be patient. If you reset the system before the disk image save is complete, the disk image may be corrupted or lost completely. If you use **"Background Update"** the shutdown time should be substantially reduced.

When saving a disk image to an NTFS file system, the RAMDisk driver automatically enables compression on the image file. This can be a significant savings in space, as



well as greatly improve image save and load times. Additionally, if you have Windows 7 or later and format the RAMDisk as NTFS, space used by deleted files will be reclaimed, allowing the space used by the image file to shrink when data is deleted from the RAMDisk. For best performance, locate your image file on an NTFS file system. Compression of the image file can be disabled in the Options tab.

Background Update [PAID Version only]: This option greatly reduces time to shut down RAMDisk by keeping the RAMDisk backed up continuously. This is also great for data protection as the RAMDisk *.img file is as up to date as possible at any given time.

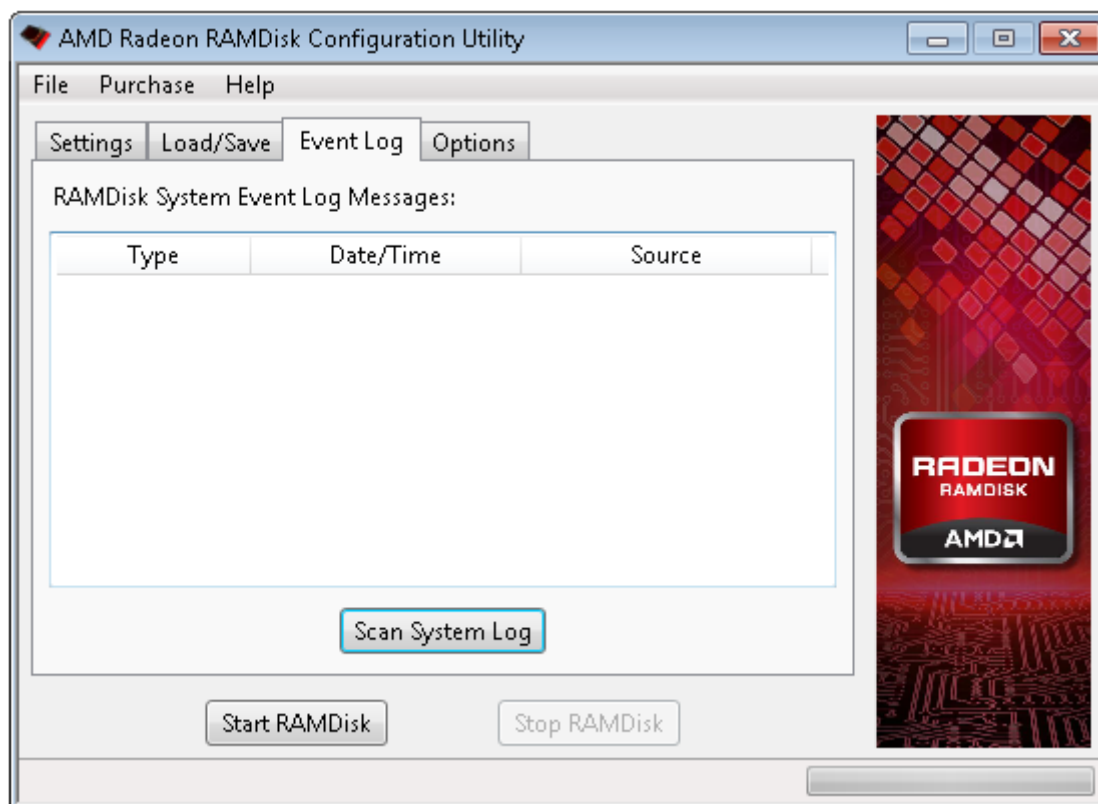
Save Disk Image Now: This button can be used to write a disk image immediately to a specified filename. Normally, when the driver starts, it locks in load/save filenames set in the GUI at the time of the start. Pressing the "Save Disk Image Now" button displays a popup that allows you to save an image to any local disk. The default location is the file selected in the "**Filename**" box, but you can select any location on a local disk. This does not override the "**Save Disk Image on Shutdown**" filename locked in when the Driver was started. You will need to stop the Driver and restart it to change the Filename registered by the Driver.

If the specified image file exists, it is renamed with a ".bak" extension and is not overwritten unless this feature was disabled when the driver was loaded (see the Options tab). Disk images cannot be saved to network shared drives.

This button can be used to save a disk image even when the other save options are disabled.

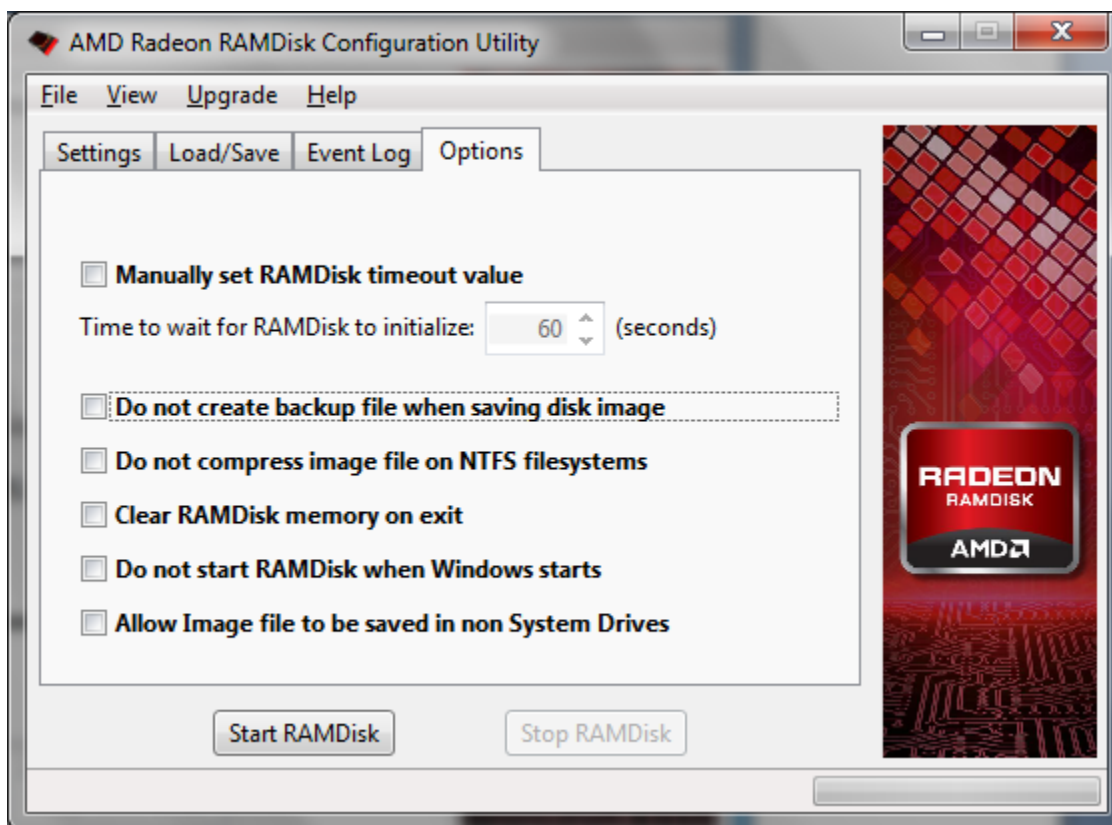
This function is also available from the File menu.

Event Log Tab



Scan System Log: This button will scan the last 1,000 entries of your Windows event log and display any RAMDisk related items. The entries displayed can be double-clicked to pull up the full event message. This is a handy feature for understanding why your disk may have failed to start or stop.

Options Tab



The Options tab allows you to configure some of the less commonly used RAMDisk options.

Manually set RAMDisk timeout value: This setting allows you to configure the timeout value the configuration tool will use when starting the driver. When you start RAMDisk, the configuration tool waits for the driver to start and communicates with the driver to make certain that the memory requested for the disk was available. If the driver does not start in the allocated time, or signals an error condition, the configuration tool will shut down the driver. The timeout value is typically set by the driver based on the disk size, but you can override the default values and set them manually from this tab.

Do not create backup file when saving disk image: Ordinarily RAMDisk will not overwrite an existing disk image file, but will move it to a file with a “.bak” extension. This is an additional data safety measure in case an image file should become corrupted. Selecting this option will disable the creation of a backup file. While this saves disk space, it can risk the safety of your data.

Because **Background Update** continuously updates the image file in-place, this option is forced on when Background Update is enabled.

Do not compress image file on NTFS file systems: Image files are saved as compressed files by default when the image is saved to an NTFS file system. This can provide significant reduction in file size as well as greatly improved load times for large images. Selecting this option will cause the image file to be saved uncompressed. NOTE: NTFS compression is only supported for files < 30GB in size. This option should be selected for disks 30GB and larger.

Clear RAMDisk memory on exit: Ordinarily when RAMDisk exits the disk memory is returned to the operating system. The disk data is still intact, and in principle it could be possible to extract the original disk data if the memory is not allocated for another use and overwritten. With this option set the entire disk image in RAM will be overwritten with 0's before the memory is returned to the operating system, completely destroying the disk contents.

Do not start RAMDisk when Windows starts: Choose this option to prevent RAMDisk from running automatically when Windows starts.

Allow Image File to be saved in non System Drive: Choose this option to save the image file to a non System Drive. Ideally the user should save the image file to System Drive. This is so that the RAMDisk driver can load the image upon reboot, if "Auto Start on reboot" is enabled. If the image is saved on a non-System Drive, the RAMDisk driver may not be able to find the image from a non System Drive after a reboot.

3. Technical Know How

Swap Space

The term "Swap space" means:

"A swap file (or swap space or, in Windows NT, a page file) is a space on a hard disk used as the virtual memory extension of a computer's real memory (RAM). Having a swap file allows your computer's operating system to pretend that you have more RAM than you actually do. The least recently used files in RAM can be "swapped out" to your hard disk until they are needed later so that new files can be "swapped in" to RAM. In larger operating systems (such as IBM's OS/390, the units that are moved are called *pages* and the swapping is called *paging*."

-TechTarget (www.whatis.com)

You can see how confusion is bred by the multitude of terms used to identify "Swap Space". Here is what you need to know: RAMDisk can never be larger than the actual RAM you have installed on your system. Some users think that because they have a large virtual memory, it will allow them to make a large RAMDisk. Users have also attempted to assign a RAMDisk as the "hard disk" to which Windows will begin swapping data when it runs out of RAM.

You can assign the Windows swap file to the RAMDisk, but keep in mind that taking too much memory away from Windows can cause it to swap more, and if you are not careful the result can reduce performance.

Temp Files

There are many kinds of Temp files and folders in Windows. There is a Temp directory that Windows will use to store files for IE cache, Windows Update scratch files, and other stuff, like WinZip scratch space, etc. In general we will refer to any file that is not important enough to back up, a "Temp file". This is an ideal kind of file/folder for RAMDisk to store, since the data is not important to preserve after initial use (in most cases). Many users like to assign their temporary internet folder to the RAM Drive. You have two important options to consider when doing this: 1) Do I save my data on shutdown? -or- 2) do I want it gone for good? If you want faster surfing, you should save on shutdown. If you want absolute security for your web usage, you should not save on shutdown.

If you use the RAMDisk as the system TEMP directory (by changing the system environment variables TEMP and TMP) then keep in mind that many applications will use this space, including applications and applications installation programs. In particular, if an application installation program expects to write files to the system TEMP directory and then expects those files to be present after a reboot (to complete the installation) and you are not saving and restoring the disk on reboot, the application installer will fail and may leave your system in an unstable state. In addition, if the RAMDisk is too small the TEMP directory may fill up. Many applications do not handle a full TEMP directory gracefully.

System Restore

IMPORTANT! Windows system restore may shut down if you enable it on a RAMDisk! It appears that since the disk is too small or too transient to include system restore information, Windows can stop creating system restore points for all drives. **FIX:** You have to go into your system restore settings and disable system restore on the RAMDisk.

"Found New Hardware" Message

If you see this message after installing RAMDisk, something has gone wrong. The RAMDisk driver is installed during setup, so Windows does not need to find a driver later. If this happens, please use the uninstaller to remove RAMDisk, check the web site for any updates, and re-install. If you have a corrupt install file, you may need to re-download. See also "Installing", below.

Disk Images

RAMDisk can save and load the entire contents of the RAMDisk to the system disk. It is important to understand that this *.img file is not a standard disk image file, but rather contains some geometry information specific to RAMDisk, so you cannot use other software to create, edit, or save a *.img file, even if the *.img file extension might lead you to believe you can. Like any file, the *.img file can become corrupted. In fact, since RAM is inherently volatile, there is a risk of data loss or corruption any time power is lost or interrupted. A corrupted RAMDisk can and will be saved to the *.img file either manually or automatically, depending on your settings.

It is strongly advised that you keep any important information backed up on more than one *.img file. Rotate your *.img file name from time to time, or better yet, use Windows backup to schedule periodic backups of the RAMDisk to a separate drive. If your *.img file is lost or corrupted, it cannot be restored unless you have a backup. If RAMDisk is set to automatically load image at startup, and that image is corrupted, you will get a

corrupted drive every time, until you change the file name and/or Stop and Restart the RAMDisk.

License Files

RAMDisk is offered as “freeware” for use with disks up to 4GB in size. If you have AMD memory installed in your system, you will be able to use up to 6GB disk sizes. If you purchase a license from Dataram you will receive a license file that will remove the advertisement window when you start the configuration tool and allow RAM disks larger than 4/6GB. To purchase the software, visit:

<http://www.radeonmemory.com/xtreme-key/index.php>

Installing

Be sure to install with Administrator privileges. Also, you should not get any errors on installation (aside from any Microsoft warnings about unsigned drivers or Windows logo software warnings, depending on your security settings). If you do, you may have a corrupt download. Try re-downloading. If you continue to have trouble installing, try disabling your anti-virus software. Be sure to re-enable it after you install. Be sure your file comes from Dataram. Don't use files from other download sites.

Uninstalling

Be sure to STOP the RAMDisk before you uninstall. If you get a message stating that RAMDisk could not stop, Reboot. Verify the disk is stopped (the "Stop" button will be grey, and the disk will no longer appear in "My Computer"). You may then proceed with the uninstall.

If, for some reason, you are unable to complete an automated uninstall, you can uninstall manually, using the following steps:

1. STOP the RAMDisk. If you get a message stating that RAMDisk was unable to stop, reboot.
2. Exit the GUI
3. Delete the program directory "C:\Program Files\Radeon RAMDisk" ("C:\Program Files (x86)\Radeon RAMDisk" in 64-bit Windows versions). This is the GUI directory.
4. Search your computer for the file "RAMDiskVE.sys". It should be in your root drive \system32\driver directory (if RAMDisk is still running). This is the RAMDisk driver. It is created and removed when the driver is started and stopped. If the file is there, it means the RAMDisk is running. If it could not be found, it has been successfully deleted. If the driver remains, delete it.
5. If you are sure you no longer need them, delete any RAMDisk *.img files you may have saved (default location C:\RAMDisk.img). That's it!



Support

We value your feedback. You can contact Dataram via the self-service support center at www.radeonramdisk.com/support and you can be assured that we will do our best to help you.

4. Frequently Asked Questions

Do you have a question that's not in the FAQ, or have a suggestion for something that should be? Visit the support center at www.radeonramdisk.com/support.

1. Can I run RAMDisk on 64-bit versions of Windows?	27
2. Can I format a RAMDisk drive?.....	27
3. How do I create a non NTFS formatted RAM disk?	28
4. Can I modify the partitions on the RAM disk?	28
5. Why doesn't the image file timestamp seem to be changing when I have AutoSave turned on?	28
6. Can I boot from RAMDisk?	28
7. The driver is started but I don't see a drive letter for the RAM disk in My Computer.	28
8. Can I use a RAMDisk as a raw drive for a virtual machine (VMWare or VirtualBox)?	28
9. On RAMDisk application launch user gets error : "Unable to read hardware info: Unexpected error 6 at line 123"	29
10. Why are disk size and other options grayed out on first tab in 4.3 and 4.4? or	29
Why can I not change the disk size?	29
11. Error Code 2203 or 2205 on RAMDisk installation:	29
12. Where do I download the previous version from?	29
13. RAMDisk installer fails with message indicating "absence of .NET Framework 4.0". But framework 4.0 and above is already installed.....	29
14. Even after uninstall Ramdisk continues to show in diskmgmt and uses up RAM.	29
15. User manual and release notes do not load.	30
16. Cannot uninstall ramdisk on windows 8.1	30
17. Troubleshooting	32

1. Can I run RAMDisk on 64-bit versions of Windows?

YES! RAMDisk supports 64-bit versions of Windows Vista, Windows 7, Windows 8 and Windows 8.1.

2. Can I format a RAMDisk drive?

Yes. RAMDisk drives can be formatted using Windows Disk Management. It is not recommended using *Partition Magic* or other 3rd party disk management tools, since they have not been tested for use with RAMDisk.

3. How do I create a non NTFS formatted RAM disk?

By default, RAMDisk GUI creates an NTFS formatted RAM disk. However a user can always open Windows Disk Management and format that disk using FAT16 or FAT32.

4. Can I modify the partitions on the RAM disk?

You can modify the partition configuration of the RAM disk Windows Disk Management. By saving and loading the RAM disk image on startup you can automatically start with the modified RAM disk, since the disk image format overrides any other configuration settings.

5. Why doesn't the image file timestamp seem to be changing when I have AutoSave turned on?

RAMDisk keeps track of write activity to the RAM disk, and if there have been no writes since the last time the disk image was saved the disk image will not be written out again. This saves on unnecessary hard disk I/O, and can make a big difference if you have a large disk image that changes infrequently.

6. Can I boot from RAMDisk?

No. Since RAMDisk is a Windows resident program, you can't load Windows from it. However, you can load a second OS instance from RAMDisk using a multi-session tool such as VMWare. In fact, RAMDisk is often used with VMWare to increase its performance.

7. The driver is started but I don't see a drive letter for the RAM disk in My Computer.

This can occur if a saved image file is a "raw" disk. Use the Windows Disk Management to assign a drive letter to the RAM disk.

8. Can I use a RAMDisk as a raw drive for a virtual machine (VMWare or VirtualBox)?

The answer is yes, at least with VMWare. Configure and start RAMDisk first with an unformatted disk image, the start VMWare and configure the virtual machine for raw disk access. If you stop and restart the RAMDisk, you will need to reconfigure the virtual machine for raw access to the RAMDisk; this is because some of the information kept in the vmdk file for raw disk access will not match after the RAMDisk is restarted. After removing the old disk and reconfiguring for access to the RAMDisk the virtual machine will boot properly.

VirtualBox as of version 4.1.10r76795 will properly install to an unformatted RAMDisk. However, the virtual machine does not recognize the disk properly if the RAMDisk is stopped and then restarted with the disk image. Reconfiguring a new vmdk to access the raw disk does not allow the RAMDisk to be recognized properly by VirtualBox. This appears to be a limitation of the VirtualBox software.

9. On RAMDisk application launch user gets error : “Unable to read hardware info: Unexpected error 6 at line 123”

Install latest version of RAMDisk 4.3 or 4.4.

**10. Why are disk size and other options grayed out on first tab in 4.3 and 4.4?
or**

Why can I not change the disk size?

It means user is in “Load existing RAMDisk image” mode. To enable all options on the first tab, user has to enter “create disk mode” by enabling “Create a New Disk” or disabling the “Load Disk Image at Startup” option in the Load/save tab.

11. Error Code 2203 or 2205 on RAMDisk installation

Set the TEMP and TMP environment variable to point to existing paths on the hard disk. If these variables point to network or non-existent paths it will result in error 2203 or 2205 during install.

12. Where do I download the previous version from?

http://www.radeonmemory.com/files/Radeon_RAMDisk_4_3_0_RC1.msi .

13. RAMDisk installer fails with message indicating “absence of .NET Framework 4.0”. But framework 4.0 and above is already installed.

Try .net framework repair.

<http://www.microsoft.com/en-us/download/details.aspx?id=30135>

14. Even after uninstall Ramdisk continues to show in diskmgmt and uses up RAM.

1. Uninstall ramdisk, if not already done
2. Reboot
3. Run Regedit. Navigate to
HKEY_LOCAL_MACHINE\SYSTEM\CurrentControlSet\Services\RAMDiskVE or
RAMDiskXP.



4. Delete RAMDiskVE or RAMDiskXP and all its subkeys from the registry. Reboot.

15. User manual and release notes do not load.

Adobe acrobat may not be installed. Please install adobe acrobat and retry. You can also launch the help and release notes by double clicking on the file at c:\program files(x86)*ramdisk\AMD_Radeon_RAMDisk_Release_Notes and c:\program files(x86)*ramdisk\AMD_Radeon_RAMDisk_User_Manual

16. Cannot uninstall ramdisk on windows 8.1

This occurs only if you have old versions of RAMDisk (prior to 4.3). Customers upgrading from windows 8 to windows 8.1 are requested to uninstall their old RAMDisk software from windows 8 before upgrading to windows 8.1 (You only need to do this if you have a version of RAMDisk that is older than 4.3. Customers with RAMDisk 4.3 and subsequent versions will not have this problem).

If they have not uninstalled RAMDisk before windows upgrade, then they should

Request patch to uninstall their old RAMDisk from windows 8.1. If patch fails, use step 1 & step 2 to manually uninstall RAMDisk from windows 8.1

Step 1:

Run regedit.exe on your computer and navigate to "[HKEY_LOCAL_MACHINE\SOFTWARE\Microsoft\Windows\CurrentVersion\Installer\UserData\S-1-5-18\Products". You should see something similar to the attached image step1. If "S-1-5-18" is not present, something similar should be there under "userData".

Under "Products" you should see one item("01EA3EA186A505444ABA7E966648BE86") whose "installproperties" is "Radeon Ramdisk". You have to delete that specific product("01EA3EA186A505444ABA7E966648BE86")(These numbers may not match). Just that one and its subkeys will be automatically deleted. Do not delete the entire "products".

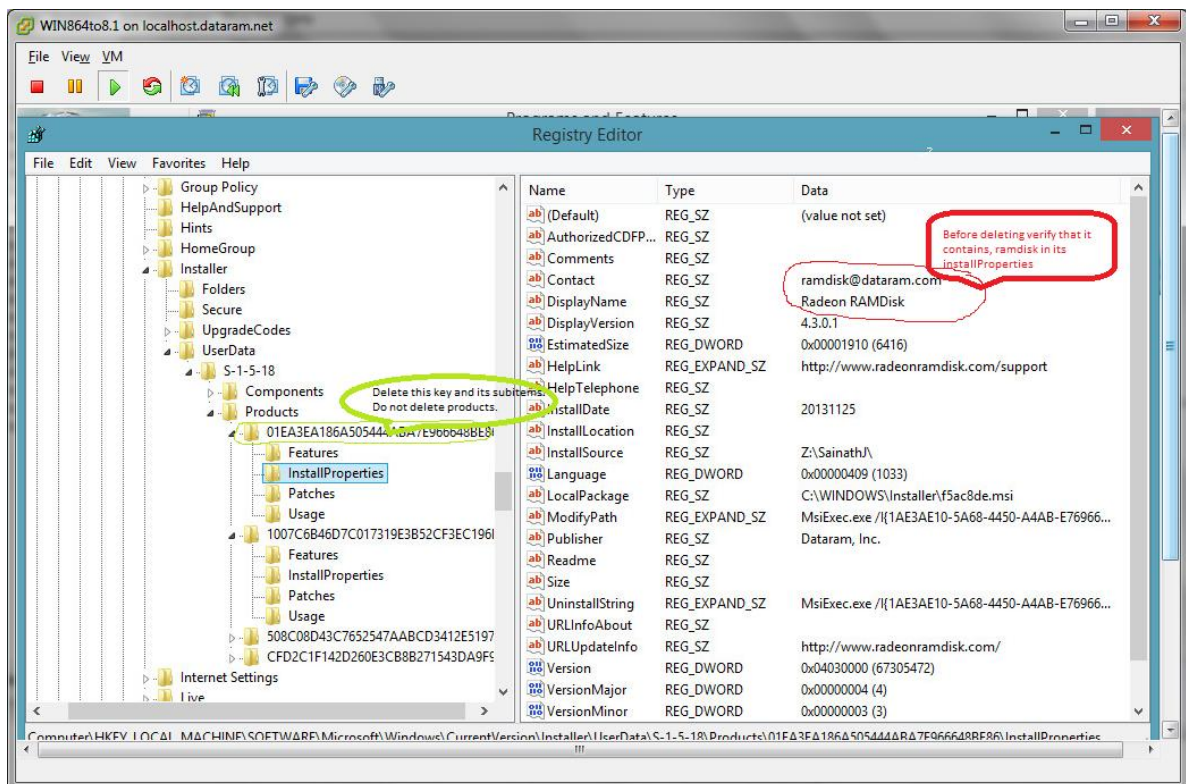
Step 2:

Run regedit.exe on your computer and navigate to "[HKEY_CLASSES_ROOT\Installer\Products". You should see something similar to the attached image step2 .

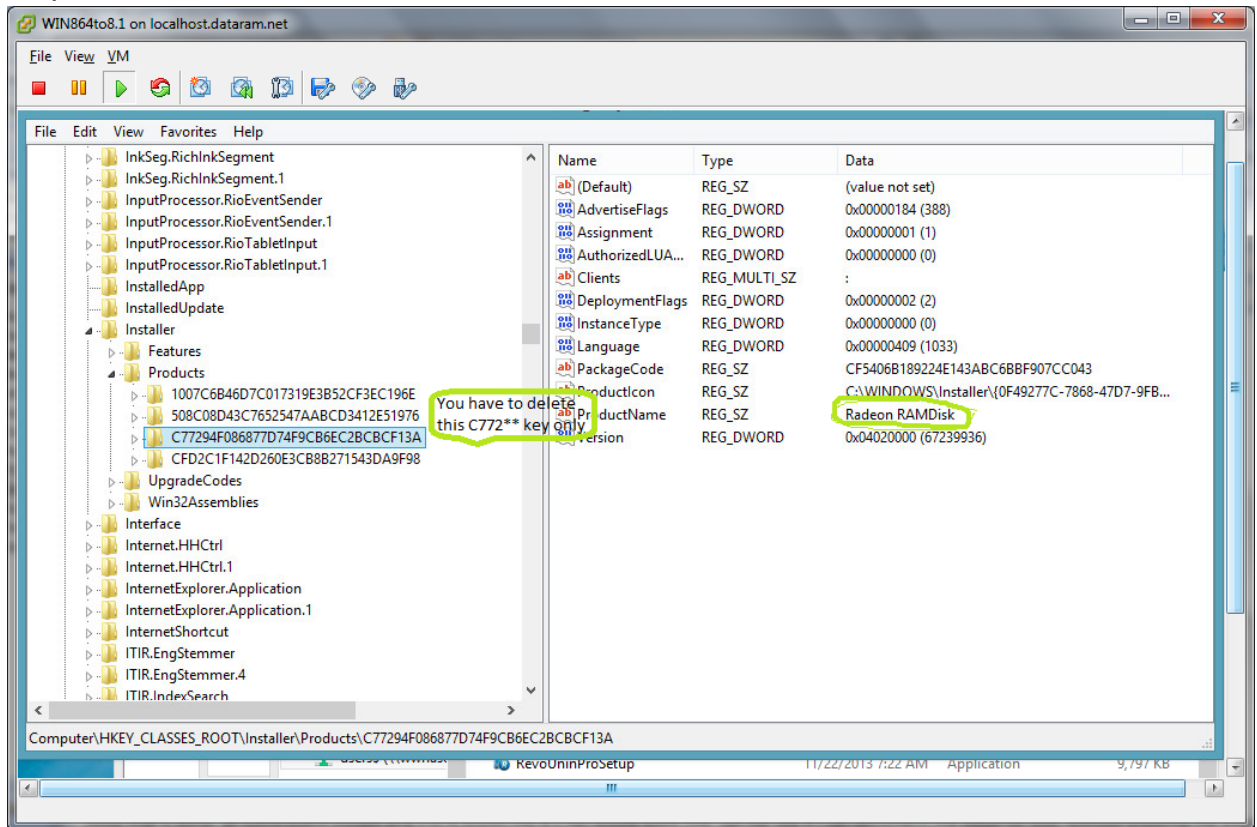
Under "Products" you should see one item similar to "01EA3EA186A505444ABA7E966648BE86" (These numbers may not match) whose "Product Name" is "Radeon Ramdisk". You have to delete that specific product. Just that one and its subkeys will be automatically deleted. Do not delete the entire "products".

After this you can install any version of RAMDisk successfully.

step1



Step2



17. Troubleshooting

1. Installation issue:

If you are unable to install RAMDisk, please create a support ticket and provide the installer log. Instructions to create the installer log...

- Run "command prompt" as administrator. This is done by clicking "start", "all programs", "accessories". Then right click "command prompt" and choose run as administrator.
- save `_RAMDisk_4_4_0_RC.msi` in `c:\test`
- in the command prompt window, go to `c:\test` and type this command `"msiexec /i _RAMDisk_4_4_0_RC.msi /!v MyLogFile.txt"` and hit enter,
- When the install is done, copy the `mylogfile.txt` and send it to us.

2. For all other issues:



Create a support ticket and attach "support information.zip" created by using menu "help", "Create support information".

5. Known Issues

1. If the TEMP environment variable points to an invalid location, the following problems may arise:

- Attempts to install RAMDisk may fail with an “Internal Error” message.
- The RAMDisk configuration tool may fail to start with an “Invalid Picture” message.
- Attempting to uninstall the software may fail with an “Internal Error” message.

2. If the TEMP environment variable points to a location on the RAMDisk, the following issues may arise:

- Attempting to uninstall the software may fail with an “Internal Error” message
- You may be unable to stop the RAMDisk driver without rebooting.

3. In many cases using RAMDisk will exercise parts of system memory that may never be used in normal operations, depending on the typical use of the system. We have found in many cases that RAMDisk exposes bad memory areas very quickly that otherwise were rarely (or never) accessed. If you are having problems with RAMDisk – typically BSODs or system freeze up - test your system memory using a memory diagnostic tool, such as memtest86 (<http://www.memtest86.com>) or memtest86+ (<http://www.memtest.org>).

4. When using RAMDisk with Acronis backup and imaging tools the system will not boot properly when the RAMDisk is running, but will crash with a BSOD indicating that “snapman.sys” caused the system to shut down. This driver is a key component of the Acronis product and is incompatible with Dataram RAMDisk. The system can be recovered by booting into Safe Mode and stopping the RAMDisk driver.

This issue has been fixed in the latest version of the Acronis SnapAPI drivers (Version 586). The version 586 drivers can be downloaded from Acronis at:

<https://kb.acronis.com/sites/default/files/content/2010/10/15097/snapapisetup586.zip>

The Acronis Knowledge Base article with full information on this issue is at:

<http://kb.acronis.com/content/15097>

5. When you try to run the configuration tool you get an error message “Automation Error 80041010”. This can occur when objects in the system WMI



repository are either missing or corrupt. You can rebuild the repository by issuing the following commands from a command prompt with Administrator privileges:

```
net stop winmgmt /y
cd %windir%\system32\wbem
rename repository repository.old
net start winmgmt
```

When you issue the “net stop” command the system will also stop dependent services, so you may see messages about other services being stopped. If this is the case it would be best to reboot after this procedure to insure that all system services are properly restarted. After this you should be able to start the RAMDisk configuration tool without error.

6. The software “3TB+ Unlock” from Gigabyte is incompatible with RAMDisk and will cause a BSOD when both are enabled:

<http://www.gigabyte.com/microsite/276/3tb.html>

Dataram is currently working with Gigabyte to resolve this problem.

Copyright 2008-2014 Dataram, Inc.

RAMDisk is a Dataram product. AMD brand, technology names and logos used under license from Advanced Micro Devices, Inc.
